



viamobil®

Gebrauchsanweisung viamobil V15

Operating Instructions viamobil V15

Instructions d'utilisation viamobil V15

Manual de instrucciones viamobil V15

Istruzioni per l'impiego viamobil V15

Brugsvejledning viamobil V15

Gebruiksaanwijzing viamobil V15

Bruksanvisning viamobil V15

Instruktionsbok viamobil V15

Käyttöohjeet viamobil V15

D

us/gb

F

E

I

DK

NL

N

S

FIN



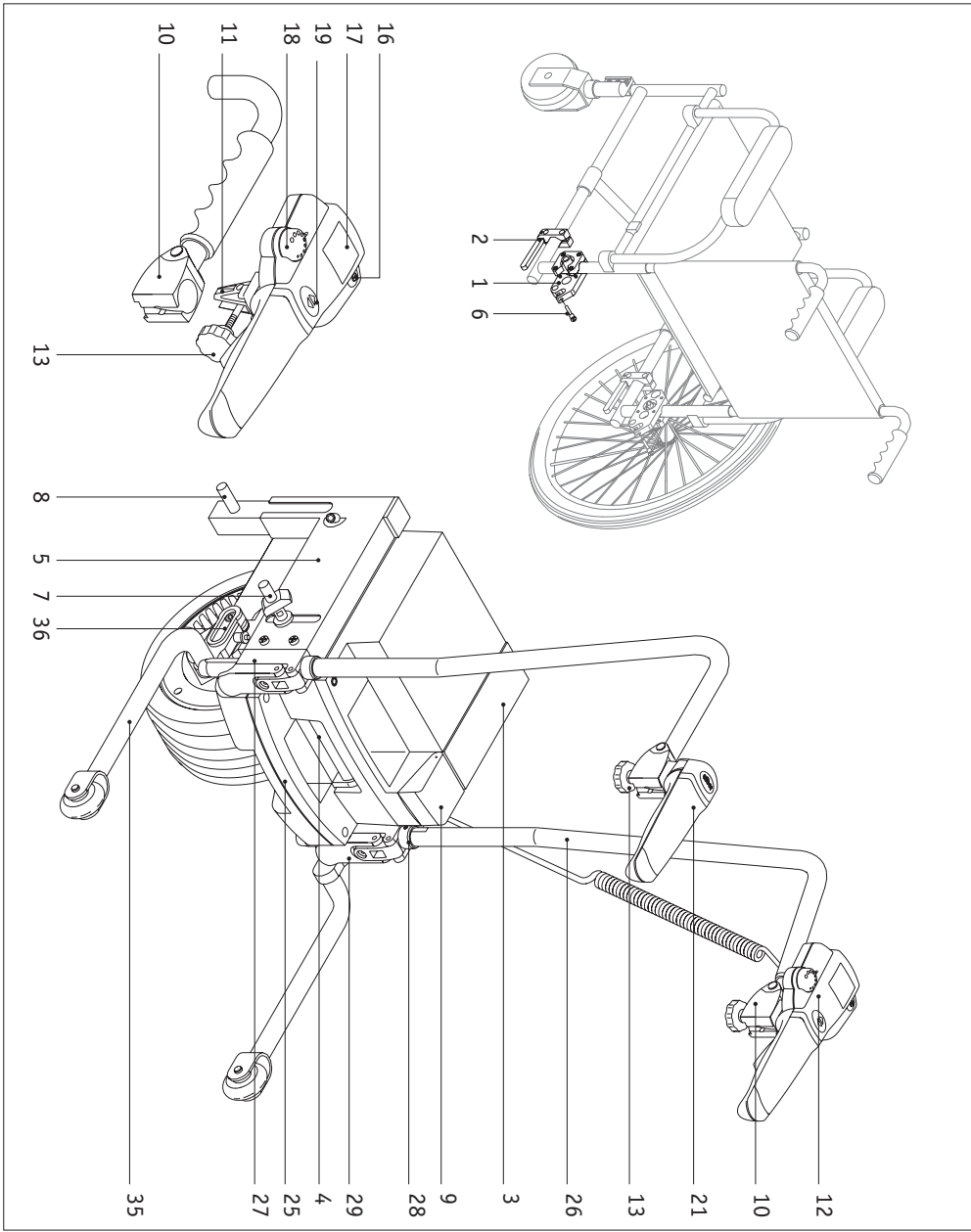


Service Center (Deutschland)

Montag bis Donnerstag von
08.00 - 18.00 Uhr
Freitags von
8.00 - 16.00 Uhr

erreichbar unter
Telefon (0800) 9096 250
(gebührenfrei)



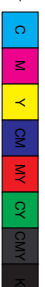




Contents

1	Introduction	2	6	Anti-tippers	24
1.1	Delivery schedule	3	6.1	Fitting and removing the anti-tippers	25
1.2	Technical data	4			
1.3	The most important elements at a glance	6	7	Additional handgrips	26
2	Fitting to the wheelchair	7	7.1	Fitting additional handgrips to the viamobil	27
2.1	Brackets	7	7.2	Removing additional handgrips from the viamobil	28
2.2	Removal of the battery pack	8	7.3	Changing the height position	29
2.3	Installing the viamobil	9	8	Instructions for the first trip	30
2.4	Installing the battery pack	11			
2.4.1	Power supply via the adapter cable	12	9	Safety and danger instructions	31
2.5	Fitting the control unit	14	9.1	Safety instructions	31
			9.2	Obstacles	32
			9.3	Danger points	33
3	Control unit	16	10	Quick help in case of faults	34
3.1	Functions of the control unit	16			
3.2	Information on the display	18	11	Care, maintenance and disposal	35
3.2.1	Battery state of charge	18	11.1	Charging the battery	35
3.2.2	Display of the direction of travel	18	11.2	Cleaning	35
3.3	Panic switch	19	11.3	Maintenance	35
			11.4	Disposal	35
4	Batteries	20			
4.1	General information regarding the batteries	20	12	Warranty, guarantee and liability	36
4.2	Charging the battery on the wheelchair	20	12.1	Warranty for defects	36
4.3	Charging the battery in the car	22	12.2	Service life guarantee	36
4.4	Changing the fuses on the batteries	22	12.3	Liability	36
5	Removal of the viamobil from the wheelchair	23			





Important safety instructions - must always be observed

The viamobil is a push and braking aid which must be used exclusively by the person escorting the occupant of the wheelchair. Under no circumstances may the person sitting in the wheelchair operate the viamobil himself / herself (as an electric driver for the wheelchair).

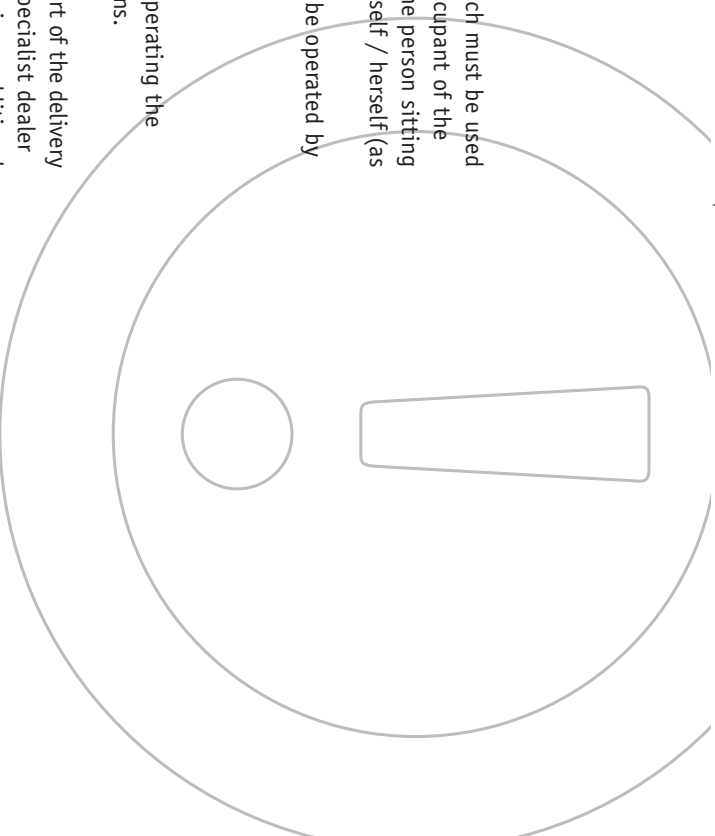
For safety reasons, the viamobil may only be operated by persons who:

- have been trained in its use
- are physically and mentally capable of operating the viamobil safely under all usage conditions.

Training for the operation of the unit is a part of the delivery schedule and can be arranged with your specialist dealer or one of the Alber regional managers. There is no additional charge made for this service.

If you are not sure how to operate the viamobil safely, also then please contact your dealer or one of the Alber regional managers.

In using the viamobil please be sure to observe the prescribed values stated by the manufacturer of your wheelchair (e.g. the maximum slope, the tyre pressures, etc.) and the general operating instructions. Under no circumstances should critical limits be exceeded.



If a mobile phone or similar device is going to be used, the viamobil must be switched off with the wheelchair standing on level ground. Travel near intense electric fields should also be avoided.

The operation of the viamobil can also interfere with other equipment such as theft-detection barriers in retail stores.



**The viamobil must not be used until training
in the operation of the device is complete**



1.1 Standard delivery schedule

- viamobil drive unit
- Control unit with wheelchair bracket
- Battery pack
- Battery charger
- Operating instructions

Optional accessories

- Additional handgrips
- Anti-tippers
- Adapter cable and storage bag



1.2 Technical data

Drive unit

Range: Up to 20 km (*)
Speed: Infinitely variable up to a max. 5.5 km/h (forwards) or a max. 2.7 km/h (backwards)
Incline: Up to a max. 18 % incline on uphill/downhill slope at 130 kg occupant weight: From a weight of 130 kg the gradability decreases proportionally to the weight of the person, down to 11 % at 160 kg.

Maximum passenger's weight:
Motor nominal output:
Maximum output:

Battery pack

Batteries: 2 x 12 Volt, 12Ah, approved for air transportation by IATA and DOT
Nominal operating voltage: 24 Volt
Operating temperature: Ambient temperature range (approx. -25 °C to +50 °C)

Control unit

Angle of inclination: -12.5° / 0° / 12.5°
Fitting: Clamping to the rear tubes of the wheelchair

Weight of individual parts

Battery pack: 9.0 kg
Drive: 12.9 kg
Control unit: 0.9 kg
Charger: 0.4 kg
Total weight: 22.8 kg



(*) The distance of travel depends on the terrain and the prevailing travel conditions. Under optimum conditions (level ground, freshly charged batteries, ambient temperature of 20 °C, uniform speed, 70 kg occupant weight, etc.) the distances quoted can be attained.

CE The viamobil meets the EC regulations for medical products
93/42/EWG.

We reserve the right to make technical and design changes as a result of constant further developments.

Charger

Please refer to the instructions provided with the charger for technical advice and instructions.



1.3

The most important elements at a glance

(please open out the overview diagram in the appendix)

6

- 1 Upper bracket (on the wheelchair)
- 2 Lower bracket (on the wheelchair)
- 3 Battery pack
- 4 Locks
- 5 viamobil drive unit
- 6 Locking pin
- 7 Upper bolt (on viamobil)
- 8 Lower bolt (on viamobil)
- 9 Fuse cover / Battery pack cover
- 10 Locator for control unit (on the wheelchair)
- 11 Cone (control unit)
- 12 Control unit
- 13 Fixing screw on the control unit
- 14 Control unit torque plug
- 15 Socket (on viamobil)
- 16 Control unit ON / OFF switch
- 17 Display
- 18 Adjusting wheel for speed pre-selection
- 19 Forwards / backwards button
- 20 Driving lever
- 21 Handle extension
- 22 Charger plug
- 23 Battery charger socket
- 24 25A fuse
- 25 Handle on the viamobil
- 26 Additional handgrips
- 27 Clamping bracket (for additional handgrips)

- 28 Set collar
- 29 Clamping bracket lock
- 30 Threaded pin in set collar
- 31 Guide rails on the additional handgrips
- 32 Clamp on the adapter cable
- 33 Battery socket on the viamobil
- 34 Socket on the battery pack
- 35 anti-tippers
- 36 Locator for anti-tippers on the viamobil

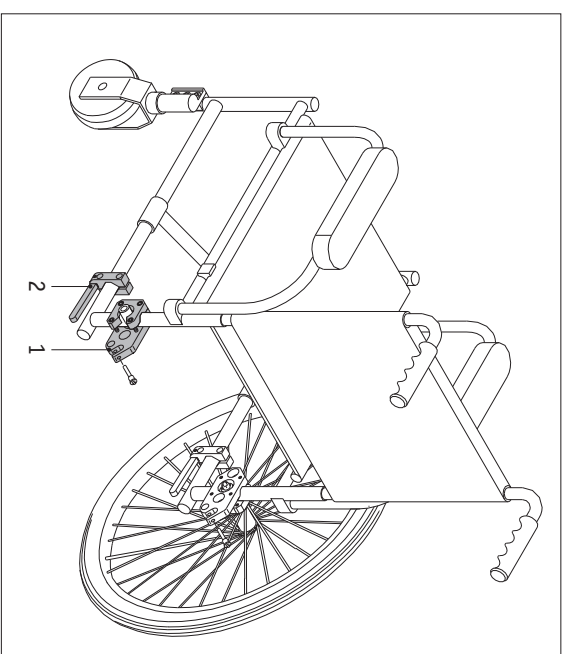


2 Fitting to the wheelchair

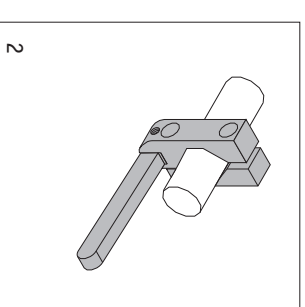
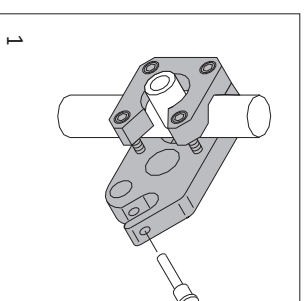
2.1 Brackets

In order to operate the viamobil there must be special brackets ([1] = upper bracket and [2] = lower bracket) mounted on the wheelchair. Alber makes these in various designs (e.g. as a complete single part or as two separate parts), so the description in this operating manual may deviate from the brackets mounted on your particular wheelchair.

The fitting of these brackets and the associated adjustments to the viamobil may only be carried out by Alber, by Alber regional managers or by authorized Alber dealers.



! From time to time check that the brackets are still tightly screwed to the wheelchair. If screwed fastenings should have come loose or even become undone, please get an authorized dealer to tighten them (a re-adjustment may be necessary).





2.2

Removal of the battery pack

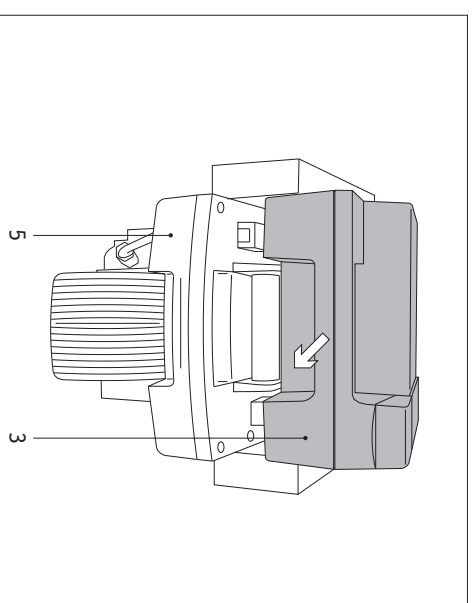
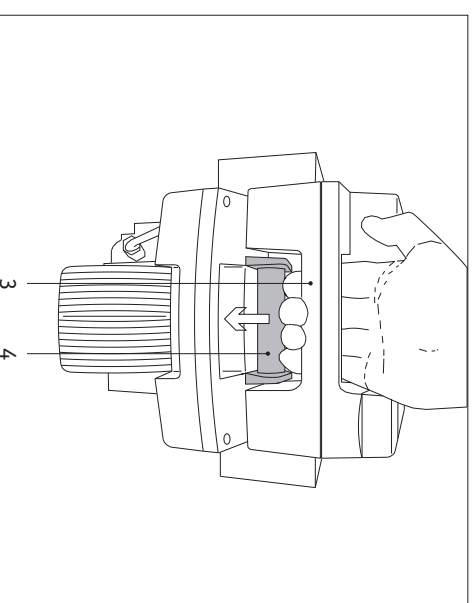
For technical reasons the viamobil is delivered with a fitted battery pack. In order to make the fitting of the viamobil under the wheelchair easier, we recommend that the battery pack first be removed.

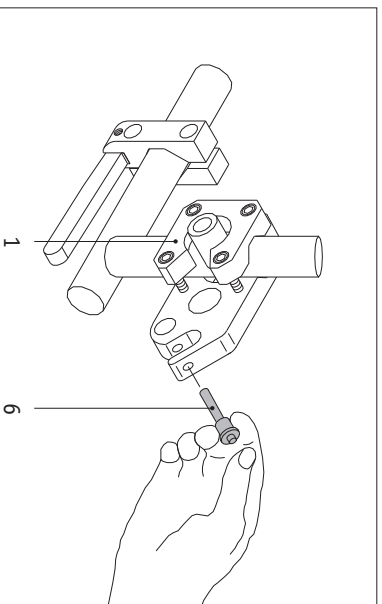
8

- As shown in the adjacent diagram, take hold of the opening on the battery pack [3].
- Simultaneously press the lock [4] downwards.
- Pull the battery pack [3] out of the viamobil drive unit [5] and lay it aside.



! If the optional additional handgrips are already fitted to your viamobil, then we recommend that you do not remove the battery pack.

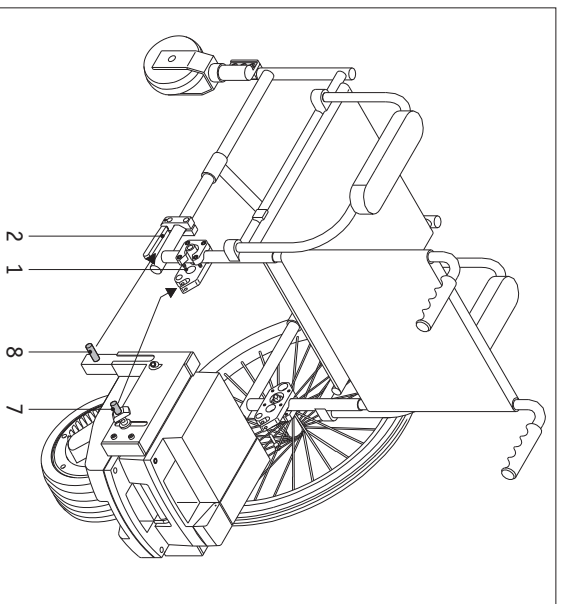




2.3 Installing the viamobil

- Remove the locking pin [6] from the upper bracket [1] by pressing with the thumb on the unlocking bolt in the centre of the locking pin and by simultaneously pulling the pin out by gripping it with the first and middle fingers.

9



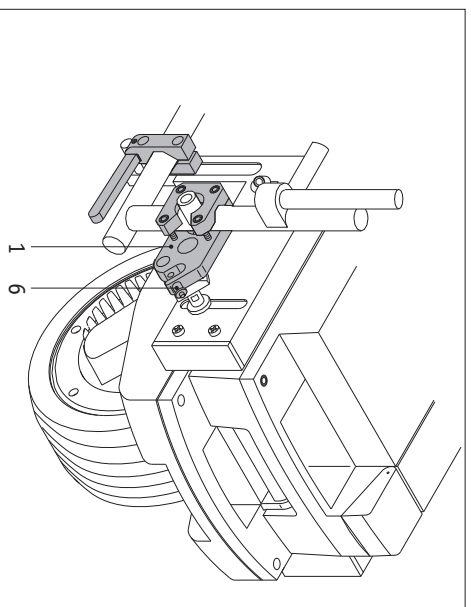
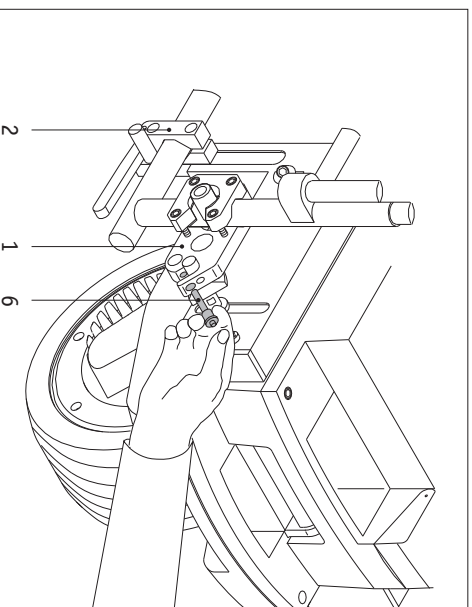
- Push the viamobil under the wheelchair, making sure that
- first the lower bolt [8] on the viamobil is inserted into the lower bracket [2] on the wheelchair and then
 - the upper bolt [7] on the viamobil is inserted in the upper bracket [1] on the wheelchair.



- Once the viamobil is located in both the upper [1] and lower [2] brackets of the wheelchair, you have to re-insert the locking pin [6] on both sides.

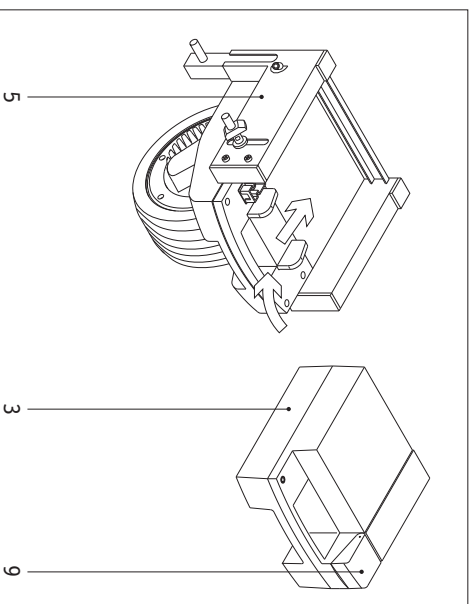
The viamobil is now attached to the wheelchair.

10



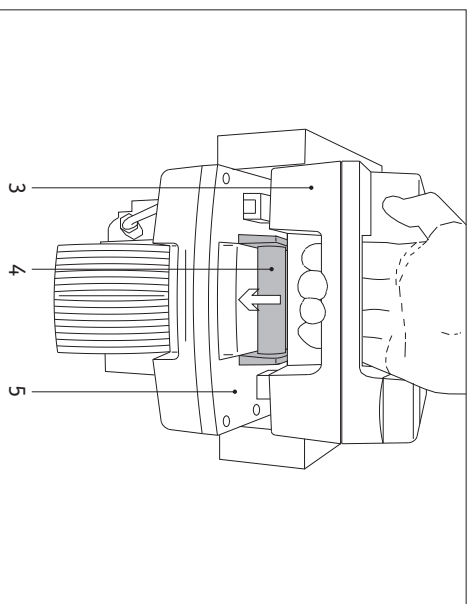
i When the brackets were mounted they were adjusted to the viamobil. This means that the viamobil does not touch the ground in its position of rest under the wheelchair. In this position the wheel is approx. 2 cm above the ground.

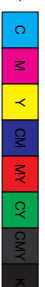




2.4 Installing the battery pack

- Place the battery pack [3] on the viamobil drive unit [5] (the blue safety cover [9] is on the right pointing upwards).
- As shown in the diagram, push the battery pack [3] to the rear up to the stop.
- In lowering the battery pack [3] push the locking mechanism [4] down.
- When the battery pack [3] is now released it is located in the required position. The electrical connections are made automatically.





2.4.1

Power supply via the adapter cable

In the case of some few models of wheelchair the battery pack cannot be placed directly on top of the viamobil drive unit because there is insufficient room.

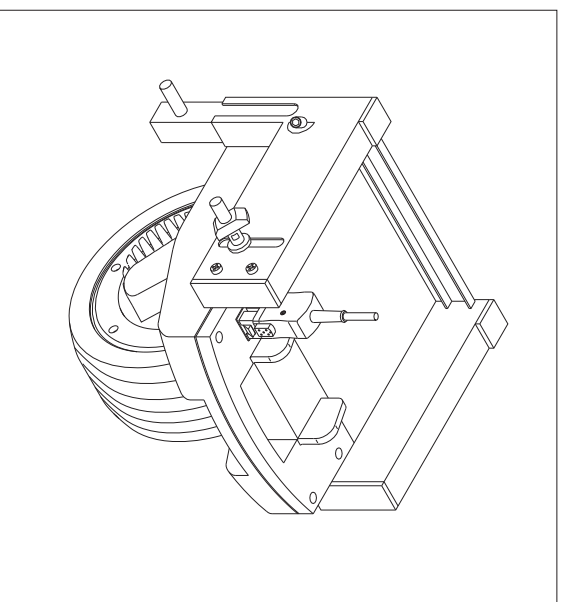
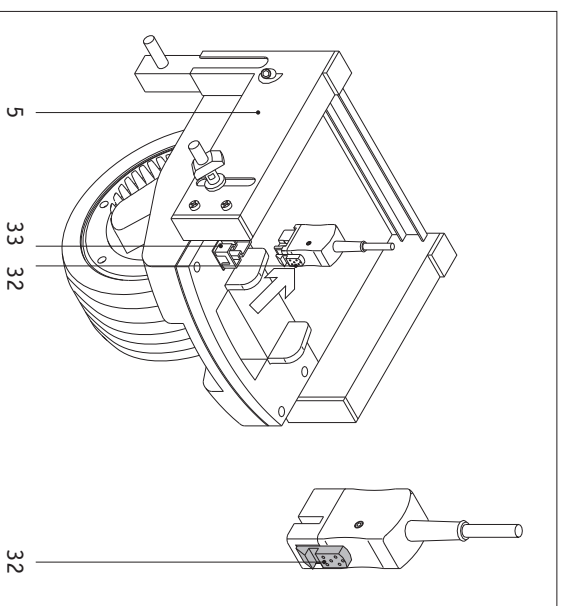
In such cases the battery pack can be attached directly to a suitable place on the wheelchair and the power supply comes via an adapter cable.

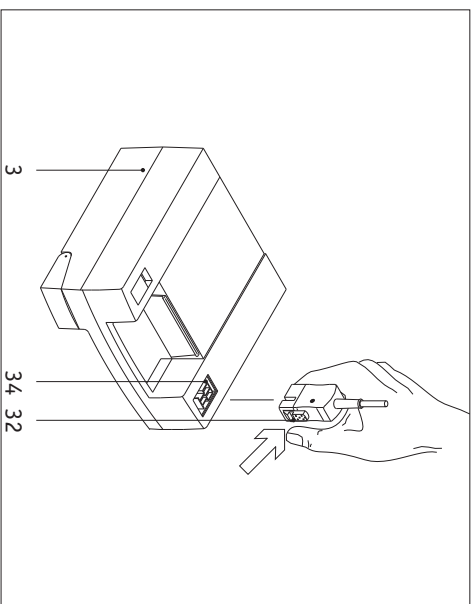
12

· First attach the viamobil drive unit [5] to the adapter cable.

· Press together the clamp [32] located in the plug and guide the plug into the battery socket [33] on the drive unit [5].

· If the plug is correctly located in the socket [33], it automatically locks into place. Check by pulling gently on the plug that the clamp [32] is locked in place.



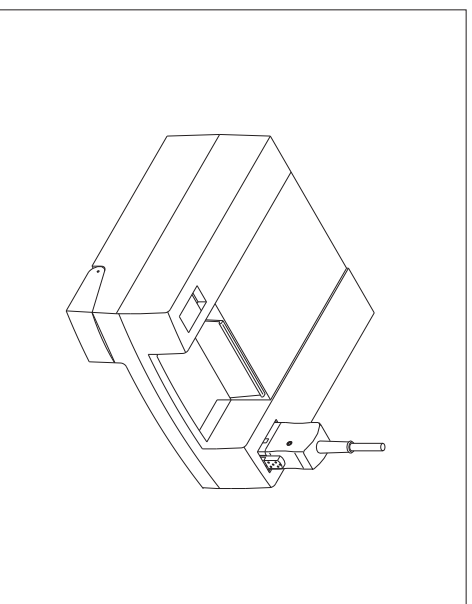


- Then connect the battery pack [3] to the other end of the adapter cable.
- Do this by pressing together the clamp [32] located in the plug and guide the plug into the socket [34] on the battery pack [3].

- If the plug is correctly located in the socket [34], it automatically locks into place. Check by pulling gently on the plug that the clamp [32] is locked in place.

As a rule the adapter cable will stay connected between the battery pack and the drive unit. If for some reason, such as for transportation purposes, these components have to be removed from the wheelchair, then the cable must **first** be disconnected from the battery pack [3] and secondly from the drive unit.

To release the plugs first press the clamp [32] again. Then pull the plug out of the socket.





2.5

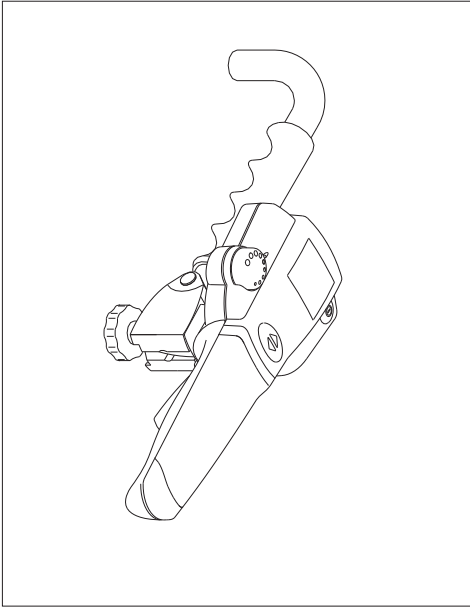
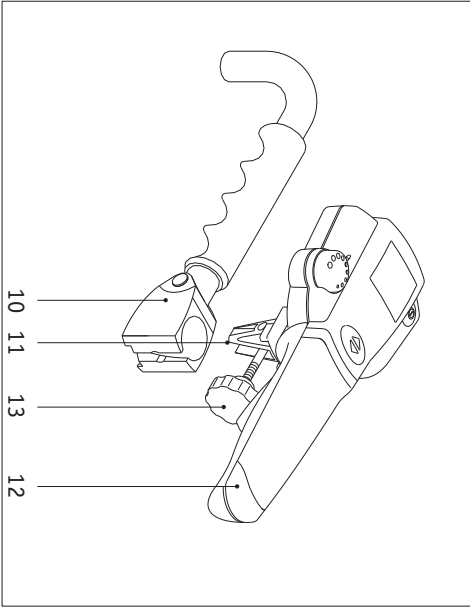
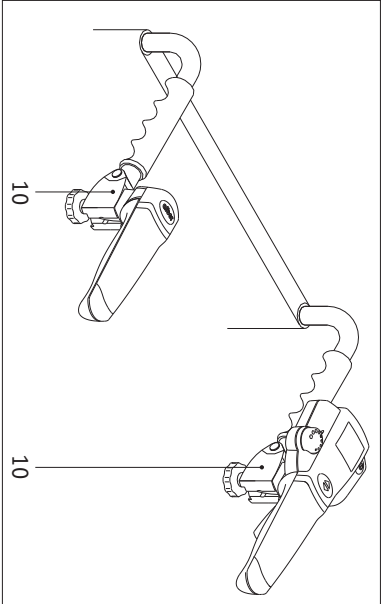
Fitting the control unit

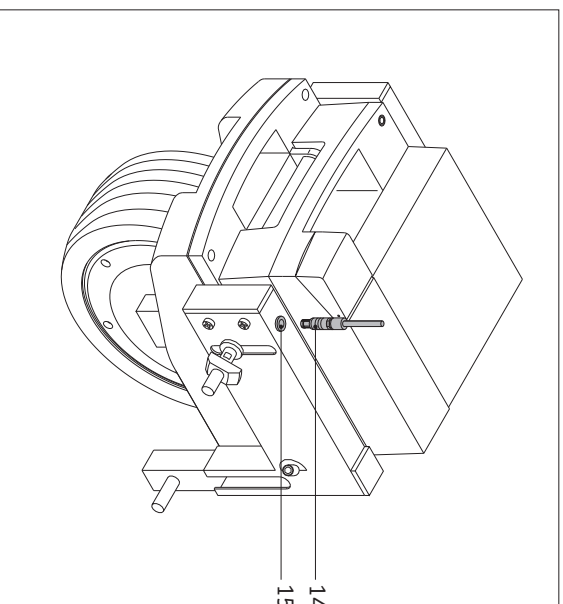
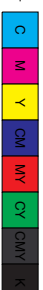
The individual order details, on the basis of which the required components were fitted, are decisive for the position of the control unit.

If the locator [10] is placed direct on the wheelchair then your desired mounting angle was already pre-set by the specialist dealer. It can be changed again by the dealer at any time.

Either the control unit or a handle extension can be inserted into the two locators [10]. The handle extension provides more ergonomic handling of the wheelchair for the escorting person.

14





- Tilt the fixing handle, as shown on the diagram, to the underneath of the control unit [12] handle.
- Guide the cone [11] underneath the control unit [12] into the locator [10] on the wheelchair.
- If the cone [11] is in the locator [10], the fixing screw [13] will fall (downwards) of its own accord into the position shown in the diagram.
- Gently pull the fixing screw [13] out until there is a firm connection between the control unit [12] and the locator [10].
- Finally, carefully insert the control unit torque plug [14] into the socket [15] on the viamobil. Plug and socket are correctly located if the two marks on them are lined up.

! Make sure that the control unit's spiral cable does not rub against the rear wheel of the wheelchair during motion.



3 Control unit

3.1

Functions of the control unit

The person escorting the occupant of the wheelchair controls all the viamobil functions using the control unit. These are:

ON/OFF button [16]

By pressing this button the viamobil is switched on (the display [17] is activated) or off (the display [17] goes out).

Display [17]

All essential operating information is constantly shown here (see chapter 3.2).

Adjustment wheel for pre-selection of the maximum speed [18]

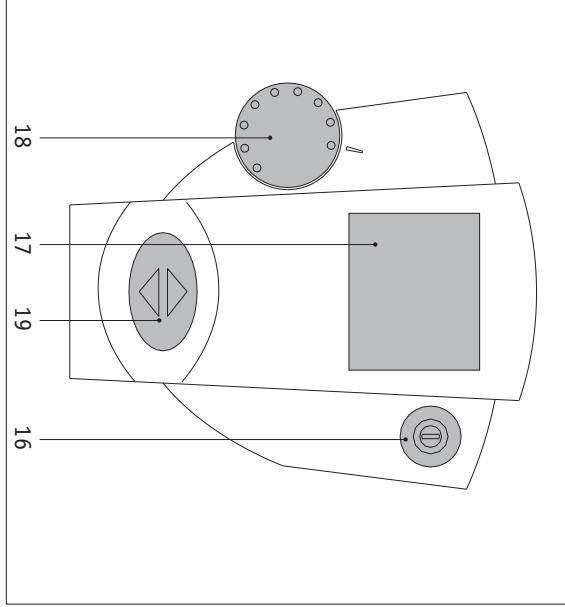
Here you can pre-select the maximum speed to be attained by the viamobil.

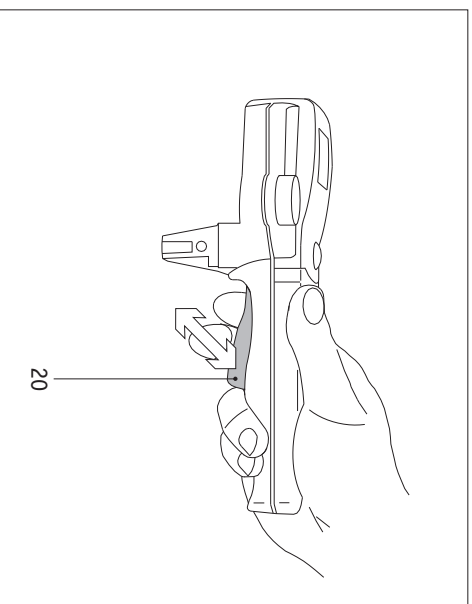
Forwards/backwards button [19]

With this you determine the direction of travel of the viamobil (forwards/backwards).

Note: When the viamobil is switched off, the direction of travel which you have selected is saved!

16



**Driving lever [20]**

This can be compared to the accelerator pedal on a car. Initially the viamobil stands still. The more you lift the lever [20], the faster the viamobil will move. The maximum speed reached (by lifting the lever [20] until there is a discernible resistance to any further movement) is limited by the adjustment wheel [18]. Additionally the driving lever [20] can also be used to set off the safety switch, which is described in detail in chapter 3.3.

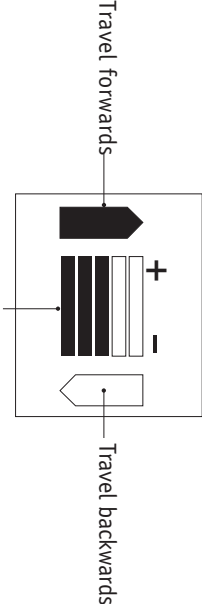


3.2

Information on the display

On the display of the control unit current travel information is constantly shown. There is the following:

18



Bars indicating the current state of charge of the batteries



3.2.1

State of charge of the batteries

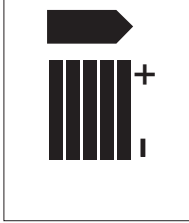
The number of bars in the centre of the display keeps you constantly updated on the remaining capacity of the battery pack.

- Five black bars: Batteries are 100 % charged
- Four black bars: Batteries are 80 % charged
- Three black bars: Batteries are 60 % charged
- Two black bars: Batteries are 40 % charged
- One black bar: Batteries are 20 % charged

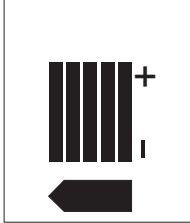
Re-charging absolutely essential

3.2.2

Display of the direction of travel



Arrow on the left hand side is black, no arrow visible on the right: direction of travel forwards



No arrow visible on the left hand side, arrow on the right is black: direction of travel backwards



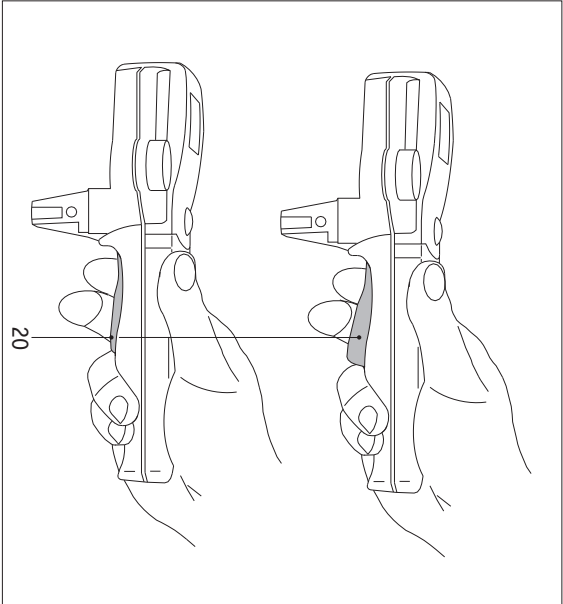


3.3

Safety switch

Particularly in emergencies it is essential that the viamobil comes to a standstill immediately. The control unit [12] has a "safety switch" for this situation. It can be engaged by the driving lever [20].

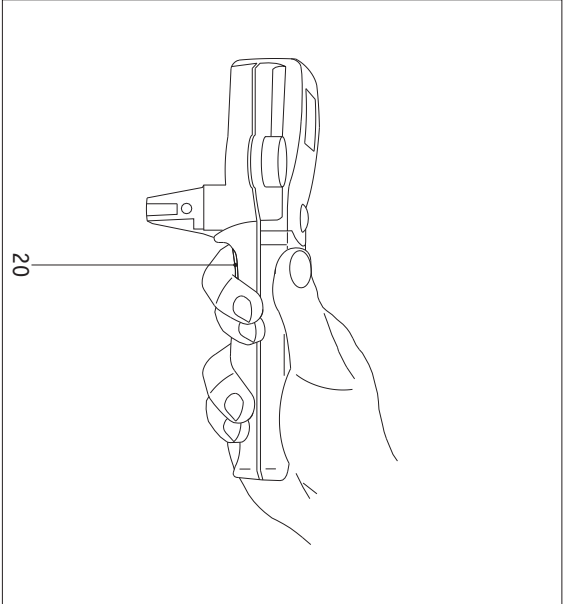
During normal use you regulate the speed with the driving lever[20] by lifting it (speed is increased) or letting it go (speed is reduced). You will observe that the driving lever [20] can be raised very easily, without any noticeable resistance.

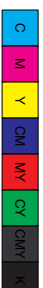


There is noticeable resistance only when you reach the upper limit of travel, which is when you attain the pre-selected maximum speed.

If you overcome this noticeable resistance by firmly raising the driving lever [20], then you trigger a compulsory switch off (immediate stop) of the viamobil. Viamobil reports this situation via a sequence of blips.

After you release the driving lever [20] again you can immediately resume travelling with the viamobil.





4 Batteries

4.1

General information regarding the batteries

The viamobil batteries are maintenance free and re-chargeable. Their lifespan depends essentially on the number of charge / discharge cycles. By looking after the batteries properly with re-charging you can prolong their life. The electronics in the viamobil constantly monitors the state of charge of the battery and enables you to prevent it getting completely discharged.

- Avoid letting the battery become completely discharged. Re-charge the viamobil battery after every partial discharge, i.e. after every use.

- Lead batteries are subject to self-discharge. Therefore the viamobil battery should – whenever possible – be constantly connected to the battery charger. Thanks to the automatic charging feature, which switches to charge maintenance after charging up, it is not possible to overcharge the batteries.

- If lead batteries are stored for a longer period of time (without being re-charged), they suffer a loss of capacity. However, after several charge/discharge cycles the full capacity will return.



The batteries on your viamobil can be charged and discharged in any position. They are as safe as dry cells and are approved for air transportation by IATA and DOT.

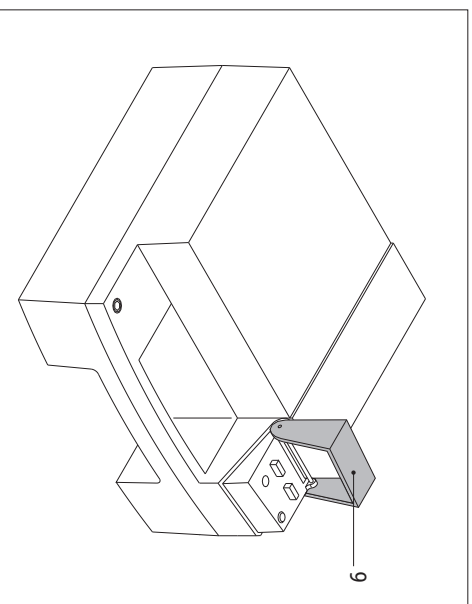
4.2

Charging the battery

To charge the battery it is not necessary to remove it from the viamobil.

- Lift the fuse cover [9] up.
- Insert the charger plug [22] into the battery charger socket [23].
- Plug the charger into a socket (90-240 V).
- **Pay attention to the instructions in the operating instructions accompanying the battery charger when charging the rechargeable battery pack.**
- After the charging cycle, pull the charger plug [22] out of the socket [23].
- Lower the fuse cover [9] again.

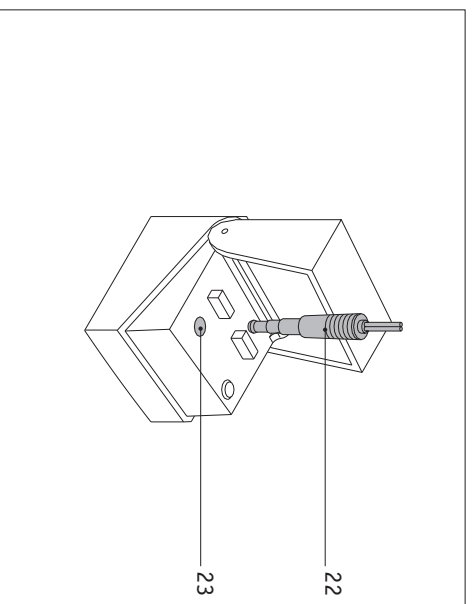




Make sure that the batteries are re-charged after every longer use of the viamobil. If the viamobil is not in use, then the batteries should always be connected to the charger. The charger automatically switches to charge maintenance once the batteries are fully charged. It is not possible to overcharge or damage the batteries.

i If the batteries are charged on the viamobil, a lockout switch prevents the drive from being switched on. It is not possible to drive off accidentally while the charger is connected.

i Always ensure that the fuse cover [9] on the battery is closed. Open it only if a fuse needs to be changed or if the battery has to be charged.





4.3

Charging the battery in the car

A suitable voltage converter is necessary for charging the rechargeable battery pack when driving in a car. This can be obtained from your regional electrical supplier.

- Replace the battery pack on the viamobil (see chapter 2.4). This automatically re-connects the electrical supply to the viamobil.

- Carry out a functional test.

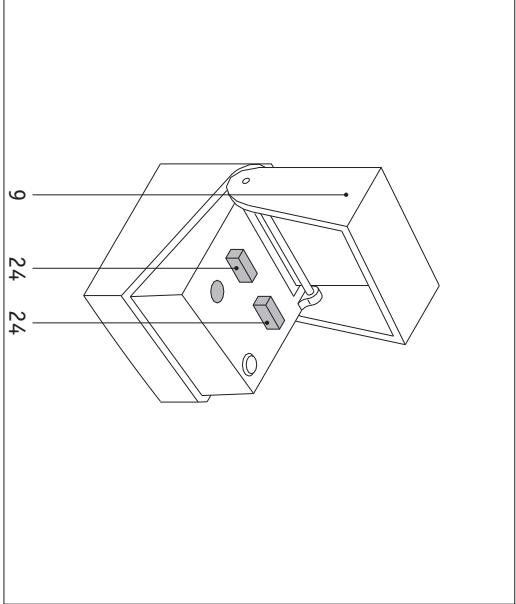
22

4.4 Changing the fuses on the batteries

To maintain electrical safety conditions there are two fuses rated at 25A each on the battery pack.

If a fuse needs to be changed, please proceed as follows:

- Remove the battery pack from the viamobil (see chapter 2.2). This automatically disconnects the electrical supply from the viamobil.
- Lift the fuse cover [9] up.
- Remove the defective fuse [24].
- Replace the defective fuse with a new one you have received from your health care specialist.
- Lower the fuse cover [9] again.





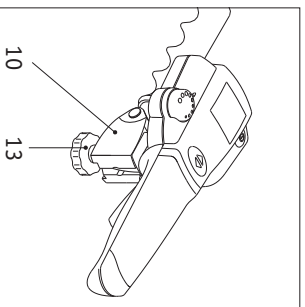
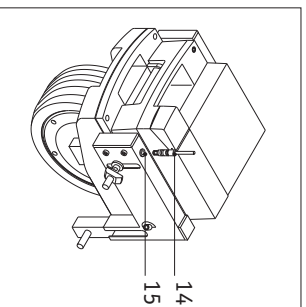
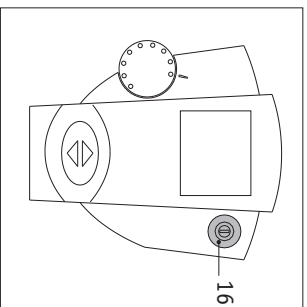
5

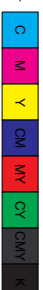
Removal of the viamobil from the wheelchair

As a rule the viamobil will remain on your wheelchair.

If it needs to be removed, however, for transportation for example, then please proceed as follows:

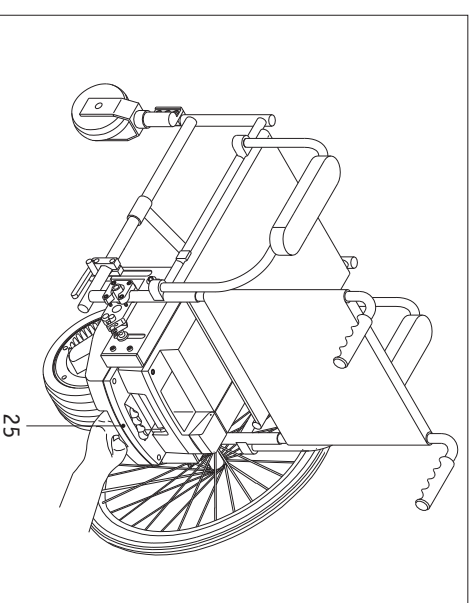
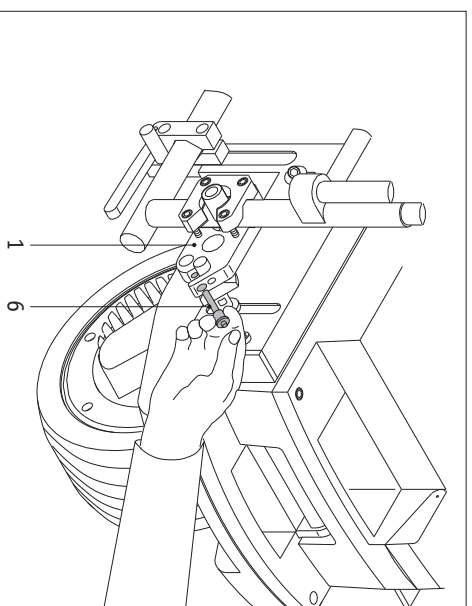
- Switch the viamobil off by pressing the ON/OFF button [16] (the display goes out).
- Then pull the plug [14] out of the socket [15].
- Release the fixing screw [13] and lift it out of the locator [10] upwards.
- Now pull the control unit out of the locator [10] and put it in a safe place.
- Remove the battery pack from the viamobil drive unit, as described in chapter 2.2.
- Put the battery pack in a safe place.
- If optional anti-tippers should be fitted to your viamobil then please remove them in accordance with the instructions in chapter 6.1.





- Remove the locking pin [6] from the upper bracket [1] by pressing with the thumb on the unlocking bolt in the centre of the locking pin and by simultaneously pulling the pin out by gripping it with the first and middle fingers.
- Pull the viamobil out by its handle [25] from underneath the wheelchair.
- If the optionally available additional handgrips should be fitted to your viamobil then remove them in accordance with the instructions in chapter 7.2.
- Put the viamobil in a safe place.

24



6 Anti-tippers

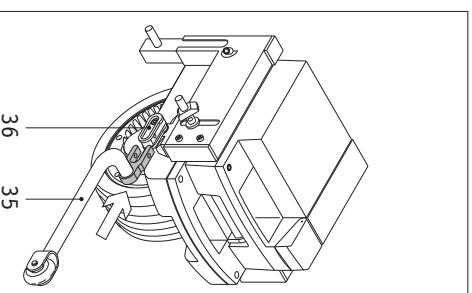
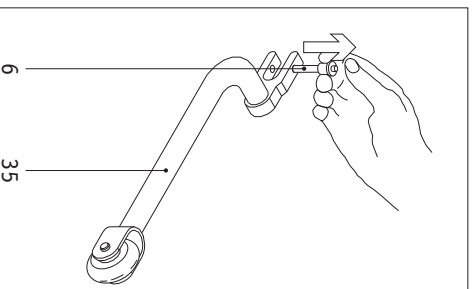
(Optional accessory)

As most wheelchairs are fitted with anti-tippers as a standard feature, Alber anti-tippers are offered as an optional accessory for the viamobil.

If you ordered anti-tippers for your viamobil, the necessary brackets are already in place.

If you wish to fit anti-tippers to your viamobil at a later date, your specialist dealer will mount the brackets for you.





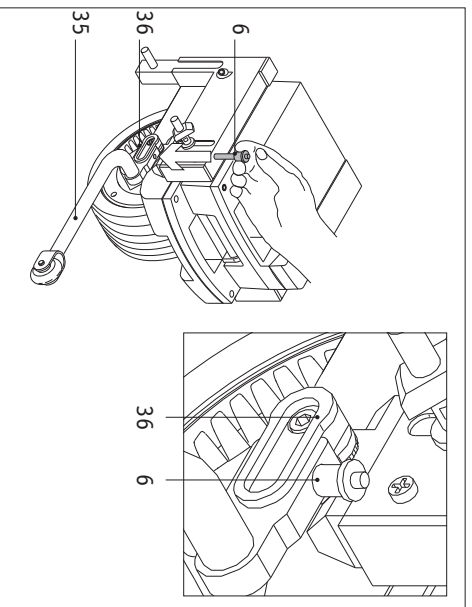
i It is strongly recommended that anti-tippers are mounted to your viamobil or wheelchair for drives on flat surfaces!

The use of paired anti-tippers is mandatory on drives on uphill slopes over 8 %.

6.1

Fitting and removing the anti-tippers

- Remove the locking pins [6] from the anti-tippers [35] by pressing with the thumb on the unlocking bolt in the centre of the locking pin and simultaneously pulling the pin out by gripping it with the first and middle fingers.
- Push the anti-tipper [35] into the locator [36] on the viamobil, as shown in the diagram.
- Then lock the anti-tipper [35] in the locator [36] with the locking pin [6] by pressing with the thumb on the unlocking bolt in the centre of the locking pin and pushing it completely up to the stop into the locator [36].
- Check that the locking pins [6] are firmly placed in the locators [36]. It must not be possible to remove them without pressing on the unlocking bolt!
- To remove the anti-tippers [35] from the viamobil proceed in the reverse order.

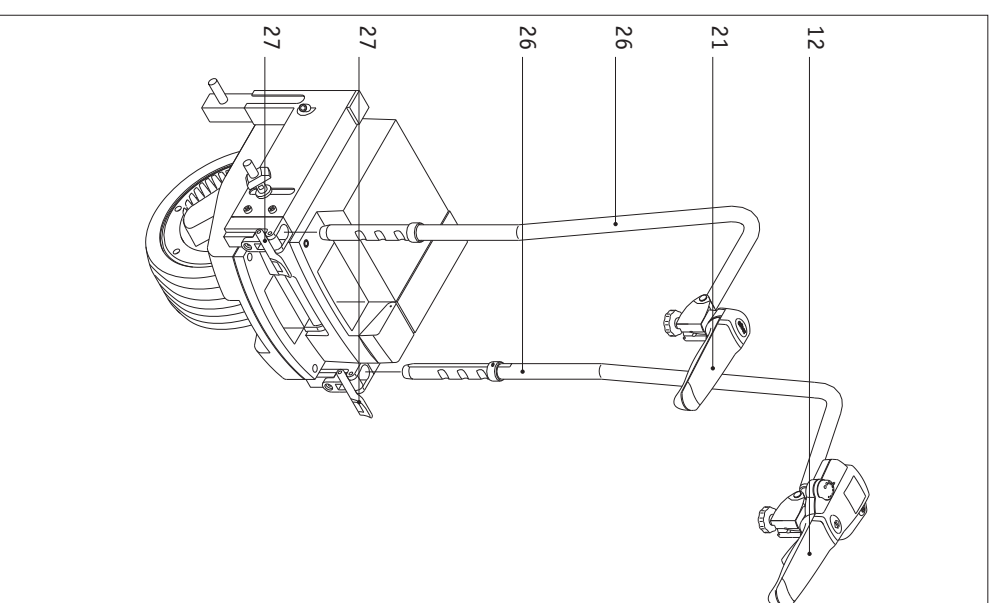




7 Additional handgrips (Optional accessory)

The clamp brackets [27] required for fitting additional handgrips [26] are mounted on the viamobil by your dealer. He will also fit the control unit [12] and handle extensions [21] to the additional handgrips in accordance with your wishes.

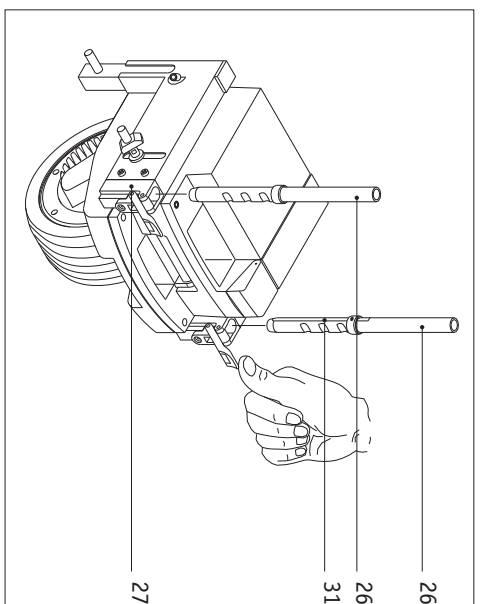
26





7.1

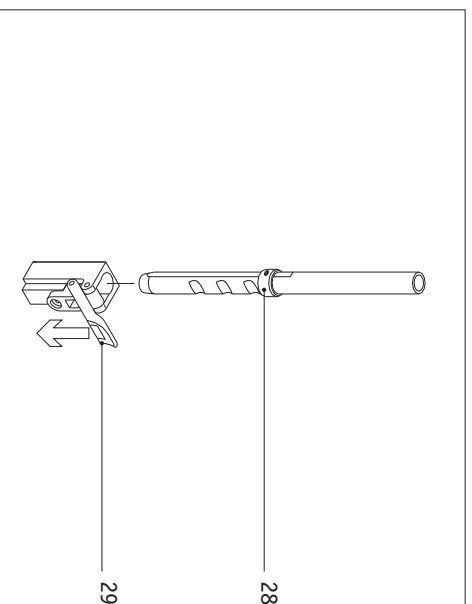
Fitting additional handgrips to the viamobil



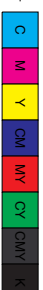
- Insert the additional handgrips [26] into the clamping brackets [27] as shown in the diagram. Make sure that the guide rails [31] of the two tubes are lined up properly.
- A set collar [28] already fitted by your dealer serves as a stop for fixing the height adjustment.
- If the set collar [28] rests on the clamping bracket [27], press the clamping bracket lock [29] down.

- The additional handgrips [26] are now firmly connected to the viamobil.

- Connect the control unit to the viamobil (see chapter 2.5).



The fitting of the control unit [12] and the handle extensions [21] on the handgrips is done in the same manner as fitting them to the framework tubing of the wheelchair (see chapter 2.5). The requisite locators have already been fitted to the handgrips by your dealer.

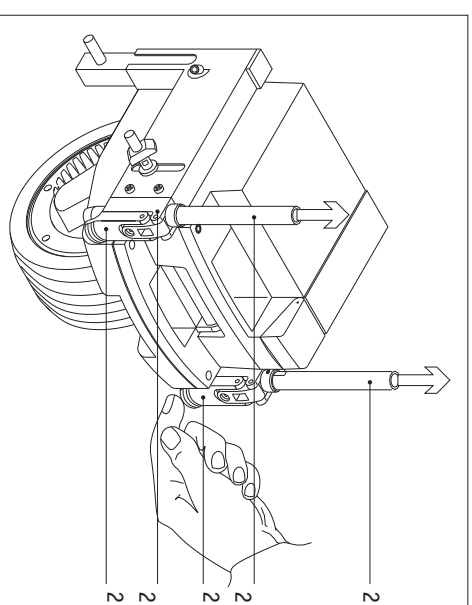


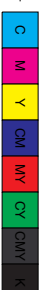
7.2

Removing additional handgrips from the viamobil

- First disconnect the electrical supply for the control unit from the viamobil (see chapter 5).
- Open the clamping bracket lock [29] as shown in the diagram.
- Pull the additional handgrips [26] out of the clamping brackets [27] and place them aside.

28



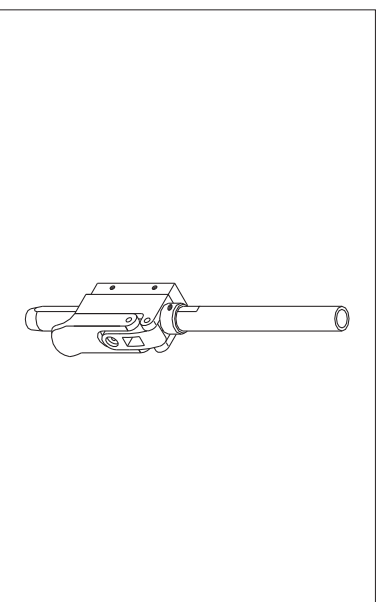
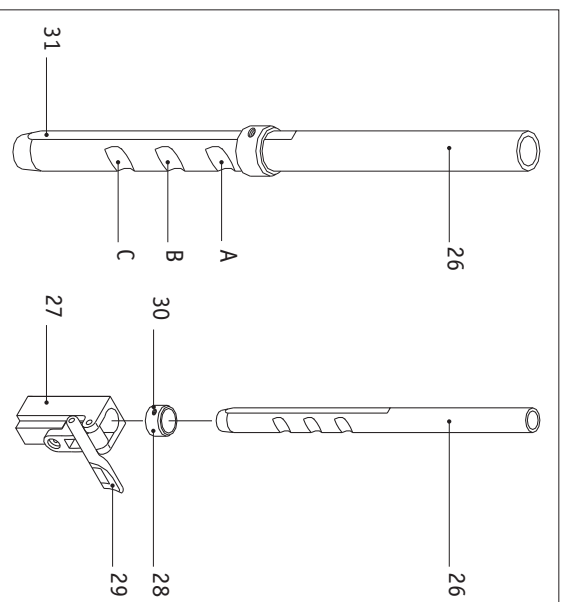


7.3

Changing the height position

The additional handgrips were fitted by your dealer and adjusted to the correct height above the ground. If you wish to change this height, then please proceed as follows:

- Loosen the threaded pin [30] in the set collar [28] so that the set collar [28] can easily be moved over the tubing of the additional handgrips.
- Push the additional handgrips [26] with the loose set collars [28] on them into the clamping brackets [27].
- Clamping by means of the bracket locks [29] can only occur in the notches A, B or C, providing 3 different distances for the handgrips above the ground.



- Choose the distance to the ground which is most suitable for yourself and close the bracket lock [29].
- Place the set collar [28] on the clamping bracket.
- Locate the threaded pin [30] onto the guide rail [31] and screw it tight.
- The additional handgrips can now be removed from the viamobil at any time. The height you have set remains fixed.





8

Instructions for the first trip

Your viamobil was prepared for use for you by Alber or by your dealer. There follow a few instructions for you for the first trip with the viamobil.

- At rest the viamobil wheel is located about 2 cm above the ground. This allows you to move the wheelchair without help from the viamobil.

- After the viamobil is switched on by pressing the ON/OFF button [16] on the control unit (see also chapter 3) the wheel is lowered to the ground and the viamobil is ready to go.

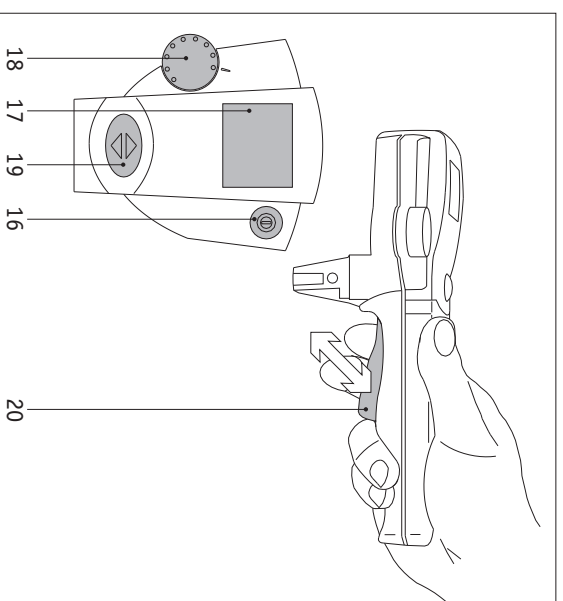
- Please check which direction of travel is indicated on the display [17] and correct it if necessary by pressing the button 19.

- Turn the adjustment wheel for pre-selecting the maximum speed [18] counter-clockwise up to the stop. With this you have pre-selected the minimum speed.

- Now pull the driving lever [20] slowly upwards - the viamobil begins to move the wheelchair.

- Get acquainted with the driving properties of the viamobil at this lowest speed. Then you can increase the pre-set speed a little, drive forwards and backwards and get a feel for the functions of the driving lever [20].

- Also be sure to try out the safety switch (see chapter 3.3). To do this press the driving lever upwards fast and hard while travelling **at minimum speed** - the viamobil will immediately come to a standstill.
- After only a few minutes practice, you will become familiar with the operation of the viamobil.





9

Safety and danger instructions

For the safe use of the viamobil it is vital that the following instructions are observed.

9.1

Safety instructions

- The viamobil may only be attached to push rim wheelchairs that comply with the recognised technological regulations and that have been checked over.
- The fitting and change of the brackets for the viamobil must be carried out exclusively by Alber authorised specialists.
- Even if there are no visible and recognisable wear and tear, damages or malfunctions, a safety-related inspection should be carried out every two years on your viamobil according to §6 of the Medical Product Act (MPBetreibV).
- Please observe the operating instructions of the wheelchair when using it with the viamobil; the maximum permitted load for the wheelchair must be reduced by the weight of the viamobil (approx. 25 kg).
- Only the escorting person pushing the wheelchair may operate the viamobil. Because of the tilting danger, especially when travelling on slopes, it is not designed for wheelchair occupants themselves.
- Ensure that the tyre pressure in the wheelchair wheels corresponds to the directions of the wheelchair manufacturer.
- The parking brakes on the wheelchair to which the viamobil is to be attached must be so situated that the escorting person can easily reach them.
- On starting up always turn the adjustment wheel for speed pre-selection to the slowest speed position.
- In case it tilts, the escorting person must be capable of supporting the wheelchair and its occupant from the rear. The fitting of anti-tippers is stragly recommended.
- It is strongly recommended that anti-tippers are mounted to your viamobil or wheelchair for drives on flat surfaces! The use of paired anti-tippers is mandatory on drives on uphill slopes over 8 %.
- In order to avoid mechanical damage to the wheelchair, obstructions such as kerb edges should be approached with minimum speed in speed step 1.
- Avoid driving on surfaces that are not firm (i.e. on loose gravel, in sand, mud, snow, ice or through deep puddles of water).



32

- Under no circumstances must slopes of greater than 18 % be negotiated. In every case the maximum permitted slope specified by the wheelchair manufacturer must not be exceeded.
- Keep a sufficient distance to the kerb when driving on pavements (if possible at least one wheelchair width).
- Prior to driving with the viamobil over slopes you must be capable of using the additional drive unit properly on the level.
- Always turn the operating button for the speed selection to the position displaying the lowest speed possible when starting up and gradually increase the speed to the required walking speed.
- Never drive against steps or precipices with the additional drive unit switched on.
- Never leave the viamobil unsupervised, whether it be switched on or off.
- The viamobil brake only works **when the drive is switched on**. For any stop the wheelchair must be secured by engaging its parking brake.
- Always ensure that the battery cover is kept closed. Open it only if a fuse needs to be changed or if the battery has to be charged.

9.2

Obstacles

Obstacles with a height exceeding 8 cms, such as kerbs for example, should always be surmounted in manual operating mode.

- Switch the viamobil off and move forwards up to the obstruction.
- Lift the front wheels of the wheelchair slightly by pulling it gently by the handles to the rear and pushing down.
- Now push the wheelchair onto or over the obstacle.
- Then the viamobil can be switched on again and the journey can continue.



9.3

Dangerous ground and dangerous situations

Taking into account his driving skills and physical abilities, the viamobil driver decides for himself which routes he will travel.

Prior to setting off he must check the viamobil for worn or damaged tyres, as well as the state of charge of the batteries and the proper functioning of the control elements.



These safety checks, as well as the requisite personal driving skills, are particularly important near the following dangerous ground, which should only be tackled at the discretion of the viamobil driver:

- Quay walls, landing and berthing points, paths and places close to water, unsecured bridges and dikes
- Narrow paths, sloping ground (e.g. ramps and driveways), narrow paths beside inclines, mountain routes
- Narrow and / or sloping paths close to main arterial roads or close to chasms
- Leaf- and snow-covered or icy driving routes
- Ramps and lifting equipment on vehicles.



Slopes with a maximum gradient of 18 % can be driven on with the viamobil. (From a weight of 130 kg the gradability decreases proportionally to the weight of the person, down to 11 % at 160 kg). However, important prerequisites are faultless tyre treads, correct air pressure in the wheelchair wheels, a completely safe terrain and maximum loading of 130 kg. There is an increased tendency towards tilting to the side when on winding roads or when reversing on uphill or downhill slopes due to the shift of balance. These driving manoeuvres should be carried out with great care and only at low speeds!

Particular care should always be taken when crossing main arterial roads, cross roads and level crossings. Never cross rail tracks in the road or at level crossings by driving in parallel to them as the wheels could get wedged in.

Great care should be taken in driving on ramps attached to vehicles. During the lifting or lowering procedure of the ramp the viamobil must be switched off. The hand brakes on the wheelchair must also be engaged. This prevents the viamobil rolling away, e.g. through unintentionally issued driving commands.

When it is wet the tyres have less grip on the road surface; there is a greater risk of slipping. Please adjust your driving style accordingly.





10
Quick help in case of faults

What to do if...	Remedy	Tell...
The battery cannot be re-charged	The fault can only be remedied at the factory	Your dealer
The viamobil cannot be switched on	Check whether: <ul style="list-style-type: none">- The charger is still connected (if so, remove it)- The batteries are charged- The control unit cable is connected to the driving unit socket- The fuses have blown	
The viamobil cannot be switched on even though the charger has been disconnected	The fault can only be remedied at the factory	Your dealer
A button/switch on the control unit stricks	Under no circumstances must you continue to use the viamobil	Your dealer
The viamobil comes to a sudden standstill	First the wheelchair must be secured by engaging the parking brake. Switch the viamobil off and switch it on again. If there is no reaction then the device is faulty and must be sent to the factory	Your dealer



11
Care, maintenance and disposal

1.1.3
Maintenance

Your viamobil requires a minimum of maintenance.

Nevertheless, we recommend checking regularly that all parts and accessories are securely fixed. In order to ensure that your viamobil is safe to drive and functioning correctly, it should undergo a technical inspection every 2 years at the latest. In particular, damage that has occurred during use that is not visible to the naked eye as well as wear and fatigue can thus be detected.

For this purpose, contact directly your authorized Alber dealer.

35

11.1
Charging the battery


For every trip your viamobil needs energy. Please make sure that the battery is never completely empty, as over the long-term it may damage it. It is recommended that the battery be recharged after every use, if possible.

Always use only the battery charger supplied by Alber with the viamobil to charge the battery. This switches off automatically once the battery is fully charged. So it is not possible to overcharge the batteries.



11.2
Cleaning

The control unit, drive unit and battery pack must only be wiped with a damp (not wet) cloth. Dirt should also be carefully cleaned off the powered wheel, preferably with compressed air or using a dry brush.

 **About every two months, the locators for the anti-tippers as well as the upper and lower brackets on the wheelchair must be cleaned with a damp (not wet) cloth**

11.4
Disposal

This device, its battery pack and accessories are long-lasting products.

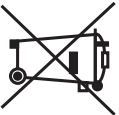
However, they may contain materials that prove to be hazardous for the environment if they are disposed of in places (e.g. landfills) that are not intended for this purpose according to the



current applicable legislation in the respective country.

The symbol of the "crossed-out refuse bin" (in accordance with WEEE Directive 2002/96/EC) is placed on this product to remind you of your obligation to recycle.

Therefore, please act in an environmentally-conscious manner and bring this product to your regional recycling centre at the end of its service life.





Please familiarise yourself with the applicable legislation in your country regarding disposal, because the WEEE Directive does not apply in all European States. For example, this product does not fall under the national implementation of WEEE in the Electrical and Electronic Equipment Act as means of transport.

These components are also alternatively taken back by Alber or Alber dealers for proper, environmentally sound disposal.

12 Warranty, Guarantee and Liability



12.1

Warranty for Defects

Alber guarantees that the viamobil is free from defects at the time of delivery. These warranty claims expire 24 months after delivery of the viamobil.

12.2

Service Life Guarantee

Alber provides a 24 month service life guarantee on the viamobil (exception: 12 months service life guarantee for the rechargeable battery pack).

The service life guarantee does not include the following:

- devices whose serial numbers have been changed, defaced or removed
- wear parts like, for example, brakes, tyres and control elements
- defects caused by natural wear and tear, improper treatment, especially defects due to non-observance of the operating instructions, accidents, negligent damage, effects of fire or water, force majeure and other causes, which are not within the sphere of influence of Alber
- maintenance work resulting from daily utilisation (i.e. replacement of burnt-through fuses, replacement of tyres)
- appliance check without finding any defects.

12.3

Liability

As the manufacturer of the viamobil, Ulrich Alber GmbH is not responsible for its safety if:

- the viamobil is handled improperly
- the viamobil is not serviced by an authorised specialist dealer of the Ulrich Alber GmbH every 2 years
- the viamobil is started up contrary to the instructions in this instruction manual
- the viamobil is run with insufficient battery charge
- repairs or other work is carried out by unauthorised persons
- foreign parts are attached or connected to the viamobil
- parts of the viamobil are dismantled.

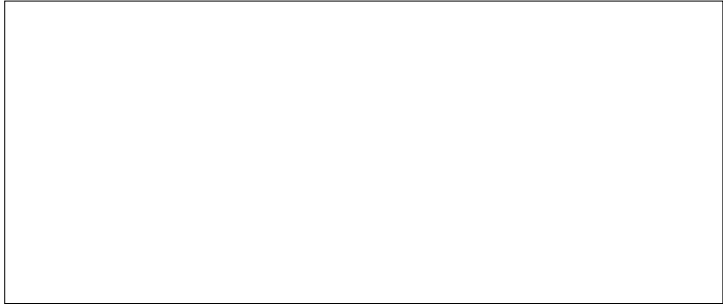


scalamobil[®]*iQ*

Gebrauchsanweisung
scalamobil S30/scalacombi S31

D

Ihre Alber-Vertretung



22.0003.4.99.03
© Ulrich Alber, Albstadt
Stand: 17.07.2008

Ulrich Alber GmbH
Vor dem Weißen Stein 21
72461 Albstadt

Telefon +49 7432 2006-0
Telefax +49 7432 2006-299
www.alber.de



Service Center

An Werktagen von
08.00 - 12.00 Uhr
und
13.00 - 18.00 Uhr
erreichbar unter
Telefon 0800 9096250

Deutschland



Das scalamobil S30 ist klassifiziert
als Gerät Typ B.

